



BUILTRITE™ HANDLERS & ATTACHMENTS

by Northshore Manufacturing, Inc.

Truck Mounted Material Handlers

Model 60-TM

Builtrite™, Model 60-TM Heavy Duty, Truck Mounted Material Handlers (Back of Cab and Tail Mounts) have proven themselves as the brute in the municipal pick up arena. These lightweight, yet robust loaders are designed to perform under the toughest conditions. From handling white goods (refrigerators, stoves, etc.) and other light scrap to brush and other green waste, this loader can handle it with ease. Several operator control packages are offered.



Features and Specifications:

Lift Capacity (Less attachment)

- 5,800 Lbs. (2,636 Kg.) @ 10' (3M) R
- 3,200 Lbs. (1,454 Kg.) @ 15' (4.57 M) R
- 2,000 Lbs. (909 Kg.) @ 18'4" (5.6M) R

Boom Data (standard-see options)

- Horizontal Reach = 18'4" (5.6M)
- Vertical Reach = 29'8" (9M)
- Main Boom Length = 9'10" (3M)
- Jib Boom Length = 8'6" (2.6M)
- High yield, fabricated steel construction.
- 2" (51mm) boom pivot and 2" (51mm) cylinder pins with magnesium bronze bushings at all pivot points.

Boom Cylinders

- One 6" (152mm) bore x 24" (610mm) stroke x 2.5" (64mm) rod main boom cylinder.
- One 5" (127mm) bore x 24" (610mm) stroke x 2.5" (64mm) rod jib boom cylinder.
- Double acting, heavy walled, honed cylinder tube.
- Wear rings on both pistons and glands.
- Rods with heavy chrome plating.



Offered with dual side mount controls or with operator's platform and seat.



Swing System

- 550° Non-continuous rotation with mechanical stops.
- 27" (686mm) diameter (O.D.), external tooth turntable bearing, powered by one swing motor and planetary swing drive.

Platform

- Rotating operator's platform with fold-down, adjustable seat and 2-lever, mechanical joysticks or optional, walk-through, stand up or side mount controls.
- Foot controlled swing.
- Safety guard rail around operator.

Main Frame

- A-Frame Style
- High tensile, heavy wall rolled steel tube.
- Overall height 13'4" (4.1M) mounted on 40" (1.0M) high truck frame.

Stabilizers

- Telescoping with two, 3" (76mm)x 42" (1,067mm) x 2" (51mm) rod cylinders.
- Load lock valves on cylinders.
- Control valves are mounted under seat.
- Dual, heavy duty ladders.

Specifications (cont.) & Range Diagram

Miscellaneous

- Requires 26" (660mm) of mounting space.
- Mounting bolts and support plates included.
- Approximate weight with standard equipment (less attachment and oil) is 5,800 Lbs. (2,636 Kg.).

Options/Accessories

- Longer boom: 20'4" (6.2M) two piece.
- 3' Telescopic boom section (for 18'4 boom only)
- Radio remote control package.
- Various grapples and other attachments available.
- Custom colors to match customer preference.

Available Attachments

We offer a wide variety of attachments including:



Bypass Pulpwod Grapple shown with 360° Indexator Rotator



Municipal Waste Grapple shown with 280° Rotator



Waste Grapple with bypass tips and 360° heavy duty rotator shown.

Hydraulic Reservoir

Note: Reservoir is shipped loose for remote mounting.

- 42 Gallons (159 Liters) with suction and return line filters.
- Air to oil cooler with 12 volt fan (shipped loose).

Power Source

- Power take-off from truck engine.

Pump

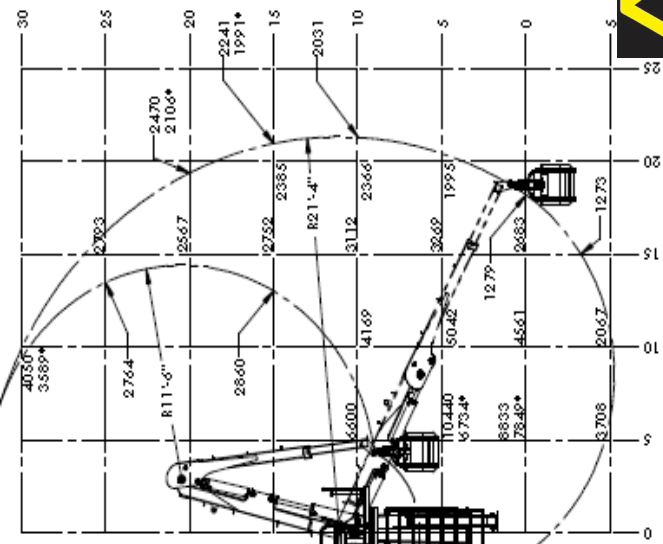
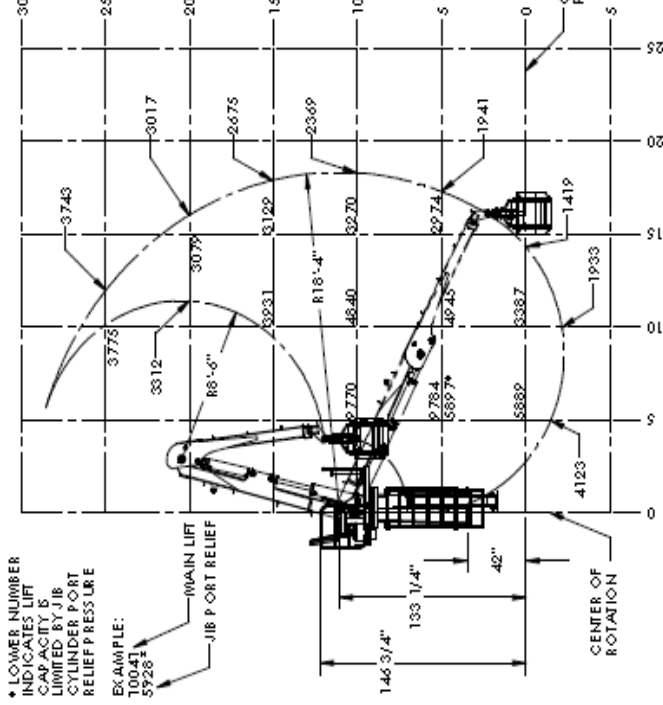
- Triple gear pump providing 20/20/10 GPM (76/76/38 LPM) @ 1400 RPM
- 1750 PSI (120 Bar) operating system.

Control Valves

- Stack type with mechanical joystick controls.



• LOWER NUMBER INDICATES LIFT CAPACITY WITH CYLINDER PORT RELIEF PRESSURE EXAMPLE: 10041 5928*



NORTHSHORE MANUFACTURING RESERVES THE RIGHT TO CHANGE SPECIFICATIONS AND PRICES WITHOUT NOTICE IN ORDER TO FOLLOW ITS POLICY OF CONSTANTLY STRIVING TO MANUFACTURE A BETTER PRODUCT WITHOUT INCURRING ANY LIABILITY TO PROVIDE THESE NEW FEATURES ON ANY UNITS PREVIOUSLY MANUFACTURED.

Northshore Manufacturing, Inc.

530 Recycle Center Drive, Two Harbors, Minnesota, U.S.A. 55616

Web: www.builttritehandlers.com **E-Mail:** info@builttritehandlers.com **Phone:** 218-834-5555 **Fax:** 218-834-5556